



ADVANCED SLEEP MEDICINE SERVICES

PATIENT INSTRUCTIONS FOR HOME SLEEP TEST

Visit our website for 4-minute video instructions:

www.sleepdr.com under the “for patients” tab

1. Install the batteries. The battery compartment is behind the belt on the main device. Make sure the positive end of each battery aligns with the + sign in the compartment.
2. The belt and pulse oximeter (finger sensor) should already be plugged into the device.
3. Place the belt around your chest with the device resting on your chest.
4. Place the nasal cannula under your nose. The nasal cannula comes in a separate plastic bag and measures airflow. Place the two prongs face down at the entrance to your nostrils. Loop the cannula over your ears and tighten the cannula under your chin to a comfortable snugness. If you're an active sleeper, secure the cannula to your cheeks using the medical tape supplied.
5. Plug the other end of the nasal cannula into the device, turning counterclockwise to tighten.
6. Place the pulse oximeter onto your index finger of either hand. The line or wire on the finger cap goes on top of your finger. Secure the line to the back of your wrist using the medical tape supplied. In the middle of the line there is a recorder (partially made of purple plastic). Clip the recorder over the belt. The system is now fully assembled.
7. Start the device by pressing the on-off button in the middle of the device for 2 seconds. The central light will turn green, and after a few seconds the 3 lights in the corners will turn green also. If any light blinks red, check the connections. Once corrected, the light will turn green. Once all lights are green, you can go to sleep as you normally do.
8. When you wake in the morning, turn off the device by pressing the on-off button for 3 seconds. The central light will turn off. If the “test complete” light turns green, you have successfully completed the test. If the light is red, call Advanced Sleep Medicine Services at (877) 775-3377 and we will help you troubleshoot.
9. Return the device using the prepaid envelope. Put the device into the envelope and seal it. Drop the sealed prepaid envelope into the parcel slot at your local post office.



ApneaLink™ Air

Introduction

Your physician or healthcare provider has given you the ApneaLink Air device to test if you have sleep-disordered breathing. The device collects information related to how much and how well you breathe at night. Read these instructions thoroughly before you begin your test.

Intended use

The ApneaLink Air device is indicated for use by Health Care Professionals (HCP), where it may aid in the diagnosis of sleep disordered breathing for adult patients. ApneaLink Air records the following data: patient respiratory nasal airflow, snoring, blood oxygen saturation, pulse and respiratory effort during sleep. The device uses these recordings to produce a report for the HCP that may aid in the diagnosis of sleep disordered breathing or for further clinical investigation. The device is intended for home and hospital use under the direction of a HCP.

Contraindications

- The ApneaLink Air system must not be used in the vicinity of an MRI device.
- Explosive Hazard: Do not use the ApneaLink Air system in an explosive atmosphere or in the presence of flammable anesthetics or gases.

General warnings and cautions

WARNING

Do not use the system if any of the accessories are ripped, broken or bent or if the housing of the ApneaLink Air device is broken.

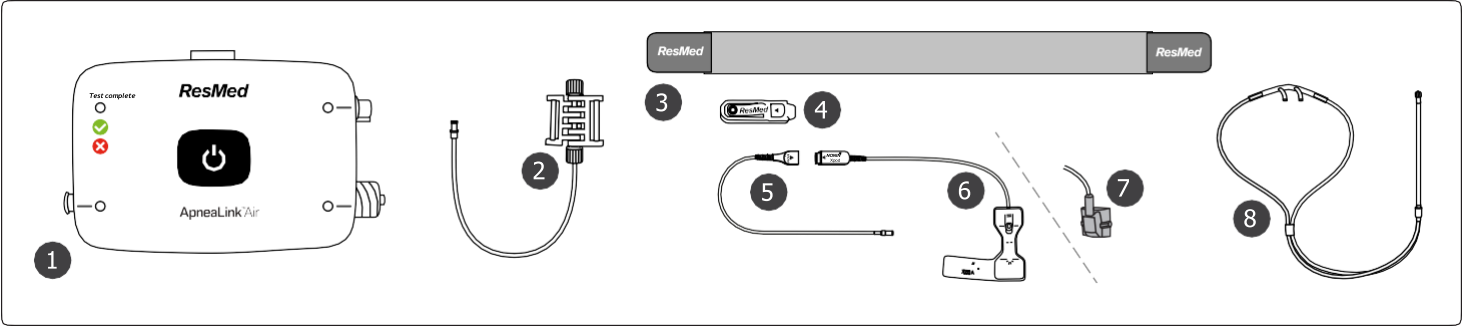
CAUTION

- In the US, Federal law restricts this system to sale by or on the order of a physician.
- Do not set up the ApneaLink Air system while it is attached to a personal computer via USB.

Equipment

The ApneaLink Air system includes:

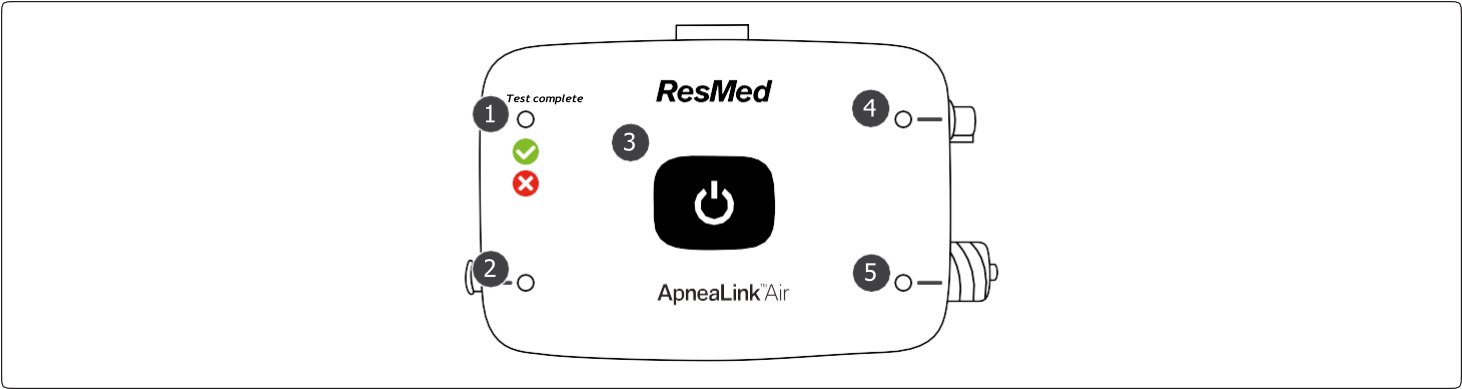
- | | | | |
|---|-------------------------------|---|--|
| 1 | ApneaLink Air device | 6 | Disposable oximeter finger sensor (optional) |
| 2 | Effort sensor (optional) | 7 | Reusable oximeter finger sensor (optional) |
| 3 | Belt | 8 | Nasal cannula |
| 4 | Oximeter belt clip (optional) | 9 | Bag (not shown) |
| 5 | Oximeter (optional) | | |



ApneaLink Air interface

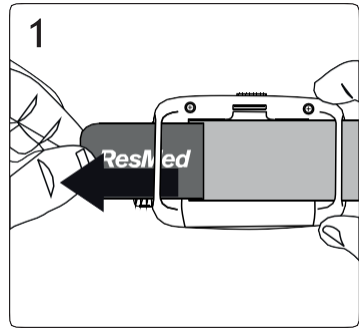
The ApneaLink Air device has the following lights, connectors and button:

- | | | | |
|---|---|---|---|
| 1 | Test complete indicator light | 4 | Oximeter connector and accessory light |
| 2 | Nasal cannula connector and accessory light | 5 | Effort sensor connector and accessory light |
| 3 | Power button | | |



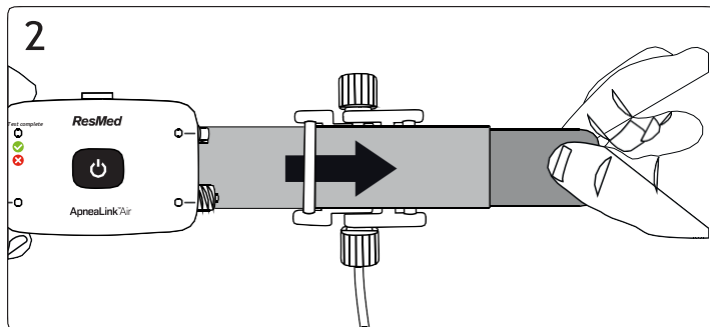
Putting the device on the belt

Before putting the device on the belt, ensure that the batteries are installed. To install the batteries, open the battery cover on the back of the device and insert two new AAA batteries.

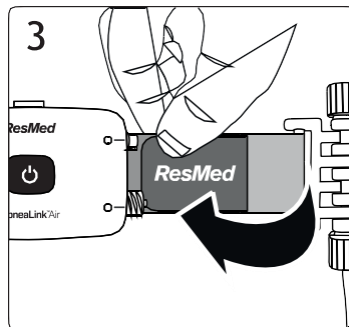


1. Thread one end of the belt through the slots on the back of the device. Check that the device is positioned as shown.

Follow these steps if you are using the effort sensor:



2. Flip the device over. Thread the end of the belt closest to the device through one of the slots on the effort sensor (if used).



3. Fasten the tab to the belt. Slide the device into a position that is close to the effort sensor.

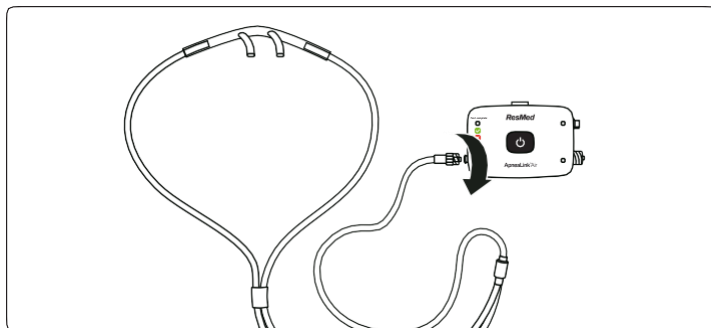
Connecting the accessories to the device

CAUTION

Do not blow into the nasal cannula or effort sensor connectors.

The accessories may already be attached to the device. If they are not attached, connect them as shown.

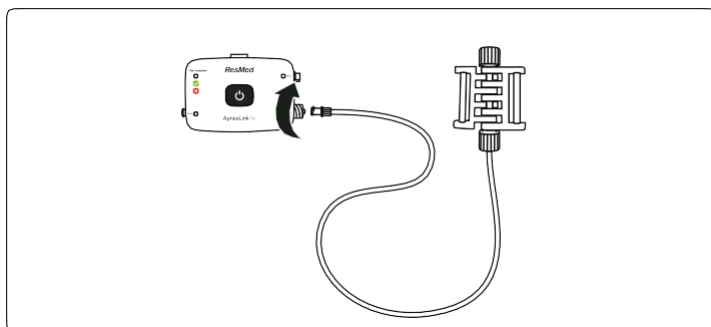
Connecting the nasal cannula



Unscrew and remove the protective cap and insert the connector end of the nasal cannula into the nasal cannula connector on the device. Turn clockwise until the connector is secure.

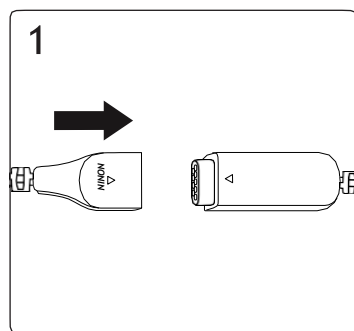
Note: Retain the protective caps to use at the completion of the test.

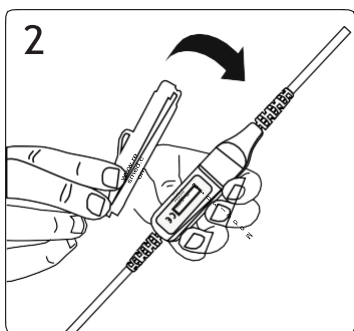
Connecting the effort sensor

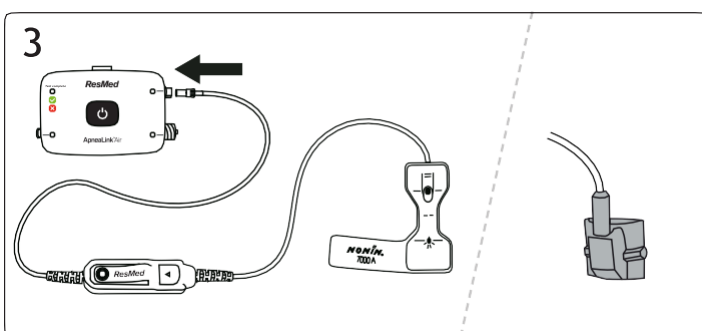


Unscrew and remove the protective cap and insert the connector end of the effort sensor into the effort sensor connector on the device. Turn clockwise until the connector is secure.

Connecting the oximeter

- 

1. Attach the oximeter finger sensor to the oximeter.
- 

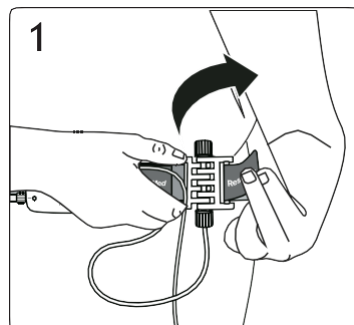
2. Attach the belt clip to the oximeter.
- 

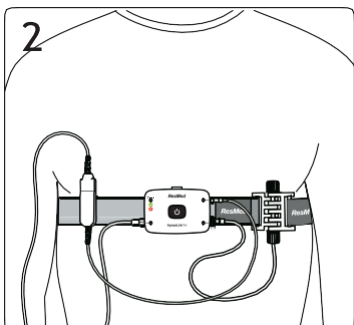
3. Attach the oximeter to the oximeter connector on the device by pushing it on.

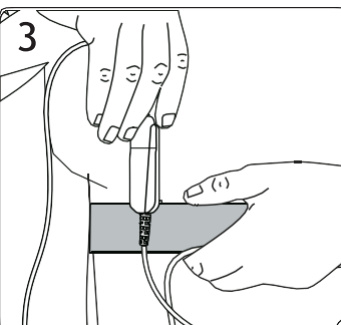
Fitting the belt

CAUTION

To avoid irritation or allergic reactions, wear the belt and device over a long-sleeved shirt.

- 

1. Pull the belt around your body. Thread the end of the belt through the slot on the effort sensor (if used) and fasten the tab to the belt. If you are not using the effort sensor, attach the tab to the belt.
- 

2. Check that the belt is secure and comfortable and that the device is positioned over the centre of your chest.
- 

3. If using an oximeter, slide the clip onto the belt. The clip should be worn on the same side of your body as the oximeter finger sensor.

Fitting the accessories

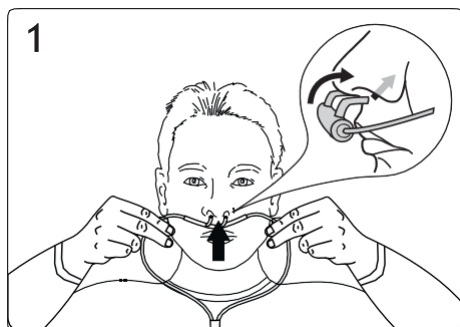
CAUTION

If you develop redness, irritation or a rash from the nasal cannula or finger sensor, discontinue use and contact your healthcare provider or physician. You may be having an allergic reaction.

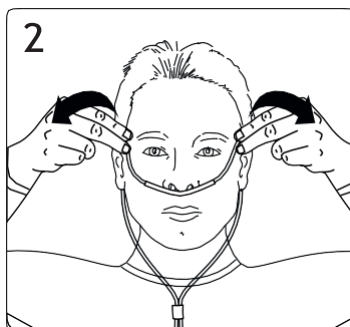
Nasal cannula

WARNING

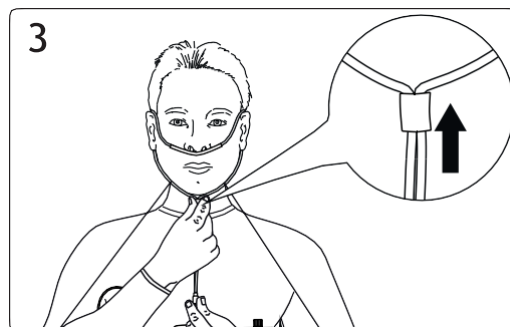
Ensure that the cannula is fitted as described so as not to pose a strangulation risk.



1. Insert the prongs into your nostrils. Make sure the curved side is pointing towards the back of your nose.



2. Loop the plastic tubing around your ears.



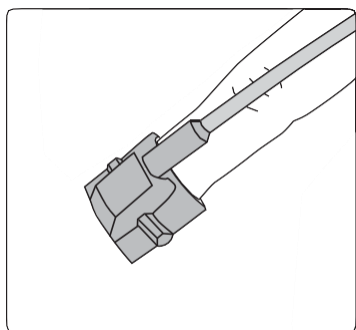
3. Pull the slider up towards your chin until the plastic tubing is secure and comfortable.

Note: If the nasal cannula does not stay in your nose, use medical tape or adhesive bandages on your cheeks to hold it in place.

Finger sensor

WARNING

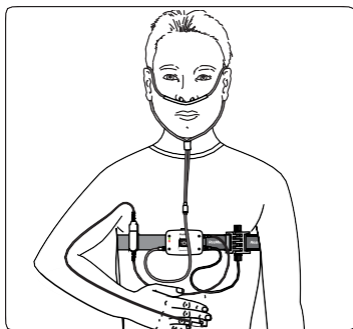
Ensure that the oximeter clip is positioned on the same side of the body as the finger sensor so as not to pose a strangulation risk.



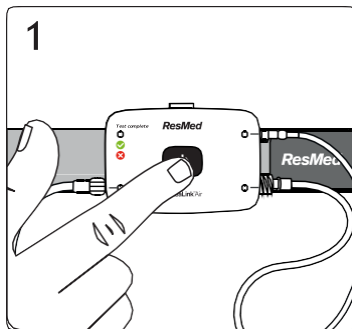
1. To fit the reusable finger sensor, slip it over the index finger on your non-dominant hand as shown.

Note: If the finger sensor is uncomfortable, you can move it to a different finger or your other hand.

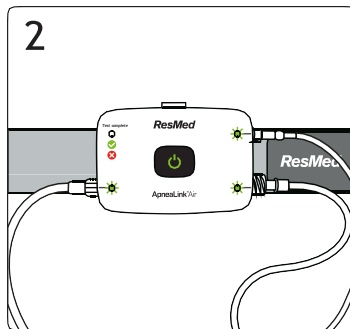
Starting the test



When properly set up, the full system looks like this.



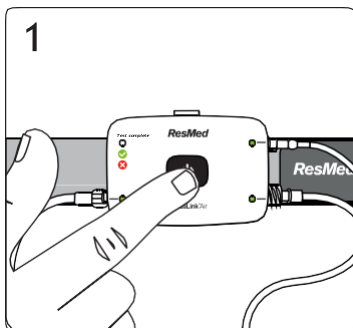
1. Press and hold the power button in the centre of the device for about three seconds or until the light turns on.



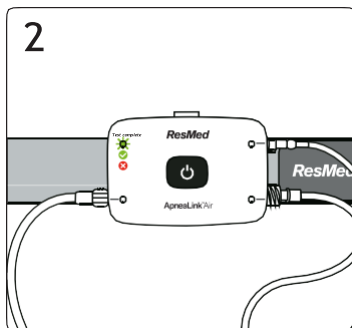
2. Check that lights next to the accessories you are using are green. If any of these lights are red and blinking, the accessories are not attached correctly.

Once you have started the test, go to sleep as normal. The lights on the device will dim after 10 minutes. If you have to get up during the night for any reason, leave the device on unless you do not intend to go back to sleep. You can remove the oximeter finger sensor if you need to go to the bathroom or wash your hands. Replace the oximeter finger sensor before going back to sleep.

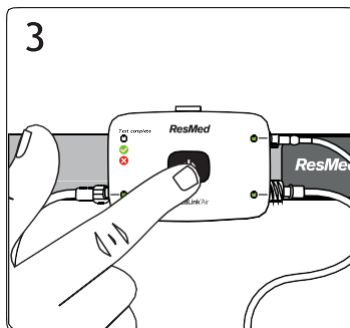
Stopping the test - check if test complete



1. Press the power button for about three seconds.



2. Check that the test complete indicator light is lit and green. This means the test is complete. If the test indicator light is red, replace the batteries and repeat the test tomorrow night.



3. Press and hold the power button for about three seconds to turn off the device.

Note:

- To re-check the test complete indicator light, press the power button until the light turns on (about three seconds), then briefly press the power button again.
- To replace the batteries, open the battery cover on the back of the device and insert two new AAA batteries.
- The device does not need any servicing or maintenance before recording.

Disassembling and returning the device

When the test is completed:

1. Remove the belt from your body.
2. Remove all the connectors from the device.
3. Screw the protective caps back on the effort sensor and nasal cannula connectors.
4. Disconnect the finger sensor from the oximeter.
5. Remove the device from the belt.
6. Throw away the nasal cannula and the disposable finger sensor (see the Equipment section on the first page).
7. Place everything else back in the bag and return it to your physician or healthcare provider as requested.

Do not attempt to clean the device.

Troubleshooting

Problem/Possible cause	Possible solution
The test complete indicator light doesn't turn on when I press the power button	
The batteries are depleted.	Replace the batteries by opening the battery cover and inserting two new AAA batteries.
The device is faulty.	If the light does not turn on after replacing the batteries, return the device to your physician or healthcare provider.
One of the accessory lights is red after I begin the test	
The accessory hasn't been connected correctly.	Leave the device turned on and reconnect the accessory according to the instructions. If using the oximeter, reconnect the finger sensor to the oximeter. Check that the light has turned green.
The accessory is not fitted correctly.	Leave the device turned on and refit the accessory according to the instructions. Check that the light has turned green.
The accessory or device is faulty.	If you cannot get the light to turn green, return the device and accessories to your physician or healthcare provider.
All of the lights (including the test complete indicator light) are red and blinking when I turn the device on	
The device is faulty.	Return the device to your physician or healthcare provider.
The effort accessory light is red and blinking when I wake up the morning	
The effort sensor became disconnected during the night.	Replace the batteries and use the device again tomorrow night.
One of the other accessory lights is red and blinking when I wake up in the morning	
One of the other accessories became disconnected during the night.	Check the test complete indicator light as described in <i>Stopping the test</i> . If the light is green, the test was successful. If the light is red, replace the batteries and use the device again tomorrow night.
The test complete indicator light is red when I turn off the device in the morning	
The device did not gather enough data.	Replace the batteries and use the device again tomorrow night.
The test complete indicator light is off when I turn off the device in the morning	
The batteries became depleted during the night.	Replace the batteries and use the device again tomorrow night.

Electromagnetic compatibility

The ApneaLink Air complies with all applicable electromagnetic compatibility requirements (EMC) according to IEC60601-1-2, for residential, commercial, and light industry environments. Wireless communications equipment such as wireless home network device, mobile phones, cordless telephones and their base stations, walkie-talkies can affect the device and should be kept at least a distance d away from the device. As example the distance d for a typical mobile phone with a maximum output power of 2 W would be 10' 8" (3.3 m).

For further details, see "Electromagnetic Emissions and Immunity" on www.resmed.com on the Products page under Service & Support. If you do not have internet access, please contact your ResMed representative.

Symbols

IP22 Protected against finger sized objects and against dripping water when tilted up to 15 degrees from specified orientation.

 Manufacturer: ResMed Ltd | Elizabeth Macarthur Drive Bella Vista NSW 2153 Australia.

See ResMed.com for other ResMed locations worldwide. For patent and other intellectual property information, see ResMed.com/ip. ApneaLink and AirView are trademarks and/or registered trademarks of the ResMed family of companies.

© 2019 ResMed Ltd.

228691/2 2019-09

CE
0123